



**Cable ID: F5-BK-1M**

Date / Time: 12/06/2019 09:47:19  
**Headroom 5.2 dB (NEXT 12-45)**  
**Test Limit: TIA Cat 5e Channel**  
 Cable Type: Cat 5e F/UTP  
 Calibration Date: 06/23/2010

Operator: SHIPQC  
 Software Version: 2.7800  
 Limits Version: 1.9500  
 NVP: 69.0%

**Test Summary: PASS**

Model: DTX-1800  
 Main S/N: 1357153  
 Remote S/N: 1357154  
 Main Adapter: DTX-CHA002  
 Remote Adapter: DTX-CHA002

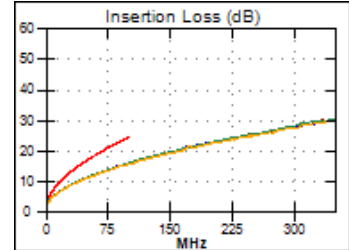
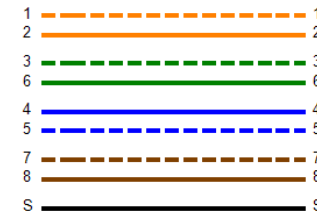
Length (m), Limit 100.0	[Pair 12]	81.7
Prop. Delay (ns), Limit 555	[Pair 36]	416
Delay Skew (ns), Limit 50	[Pair 36]	21
Resistance (ohms)	[Pair 36]	14.6
Insertion Loss Margin (dB)	[Pair 45]	8.3
Frequency (MHz)	[Pair 45]	100.0
Limit (dB)	[Pair 45]	24.0



81.7 m

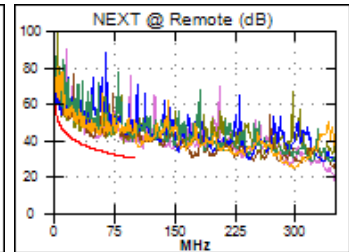
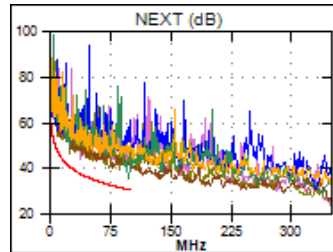


Wire Map (T568B)  
**PASS**

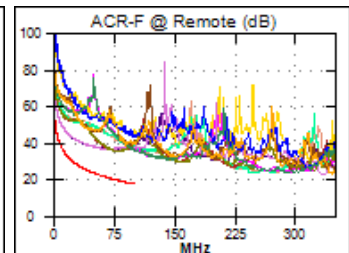
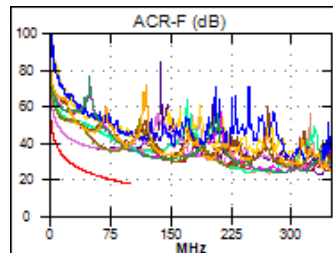


Worst Case Margin Worst Case Value

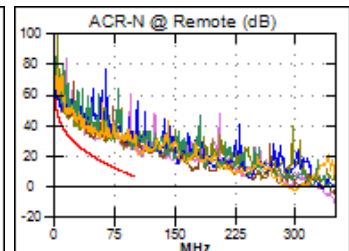
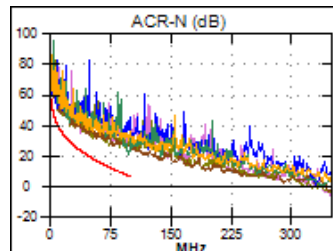
<b>PASS</b>	MAIN	SR	MAIN	SR
Worst Pair	12-45	36-45	12-45	36-78
<b>NEXT (dB)</b>	5.2	5.7	5.2	7.1
Freq. (MHz)	98.5	49.0	98.5	87.3
Limit (dB)	30.2	35.4	30.2	31.1
Worst Pair	78	36	45	78
<b>PS NEXT (dB)</b>	6.9	6.5	7.1	7.9
Freq. (MHz)	25.6	48.8	98.3	87.5
Limit (dB)	37.2	32.4	27.2	28.1



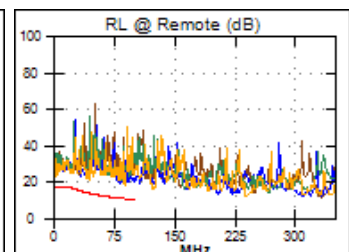
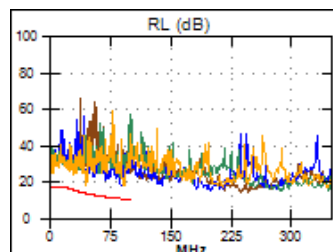
<b>PASS</b>	MAIN	SR	MAIN	SR
Worst Pair	36-78	36-78	36-45	45-36
<b>ACR-F (dB)</b>	12.2	12.2	15.7	15.7
Freq. (MHz)	10.0	4.0	79.8	79.8
Limit (dB)	37.4	45.4	19.4	19.4
Worst Pair	36	36	36	36
<b>PS ACR-F (dB)</b>	14.2	14.2	16.5	16.4
Freq. (MHz)	4.0	4.0	86.8	83.8
Limit (dB)	42.4	42.4	15.6	15.9



<b>N/A</b>	MAIN	SR	MAIN	SR
Worst Pair	12-78	12-78	12-45	36-78
<b>ACR-N (dB)</b>	8.9	7.0	13.5	14.8
Freq. (MHz)	3.3	3.3	98.5	87.3
Limit (dB)	51.0	51.0	6.4	8.8
Worst Pair	12	78	45	45
<b>PS ACR-N (dB)</b>	9.9	8.1	15.4	17.2
Freq. (MHz)	3.3	3.4	98.3	98.5
Limit (dB)	48.0	47.7	3.4	3.4



<b>PASS</b>	MAIN	SR	MAIN	SR
Worst Pair	12	12	45	12
<b>RL (dB)</b>	4.7	7.1	6.9	7.1
Freq. (MHz)	45.0	5.4	89.8	88.8
Limit (dB)	13.5	17.0	10.5	10.5



Compliant Network Standards:  
 10BASE-T 100BASE-TX 100BASE-T4  
 1000BASE-T ATM-25 ATM-51  
 ATM-155 100VG-AnyLan TR-4  
 TR-16 Active TR-16 Passive

---

Cable ID	Summary	Test Limit	Length	Headroom	Date / Time:
F5-BK-1M	PASS	TIA Cat 5e Channel	81.7 m	5.2 dB (NEXT)	12/06/2019 09:47

Total Length:	81.7 m
Number of Reports:	1
Number of Passing Reports:	1
Number of Failing Reports:	0
Number of Warning Reports:	0
Documentation Only:	0