

AOA-2412

2.4~2.5GHz Omni Antenna 12dBi

AOA-2412 antennas are professionally engineered and manufactured with the highest industry quality at the lowest possible price providing extreme value.

AOA-2412 is designed for the 2.4GHz ISM band, supporting 2.4 to 2.483 GHz and provides superb performance in IEEE 802.11b/g WiFi and Bluetooth applications.

AOA-2412 includes mounting bracket and hardware for up to 2" masts. Made with fiberglass and comes with an integrated N Female

Applications:

2.4 - 2.5 GHz ISM Band
IEEE 802.11b, 802.11g, 802.11n Wireless LAN
Directional and multipoint applications
Bluetooth
Public Wireless Hotspot
WiFi, RFID
Wireless Video Systems

Features :

Superior performance
Light weight
All weather operation
DC Short lightning protection
Installed for vertical
Includes tilt and swivel mast mount
In accordance with customer needs to change the color or features



Model	AOA-2412
Frequency	2.4-2.5GHz
VSWR	≤ 1.5
Gain	12dBi
Polarization	Vertical
Power Handling	50 Watts
Impedance	50 Ω
Beam Width	H: 360° / V: 8°
Connector	N Female
Operation Temp	-40°C ~ +80°C
Dimension	1130*70 mm
Mounting	32 ~ 45 mm (1.2 ~1.75 inch)
Weight	700g

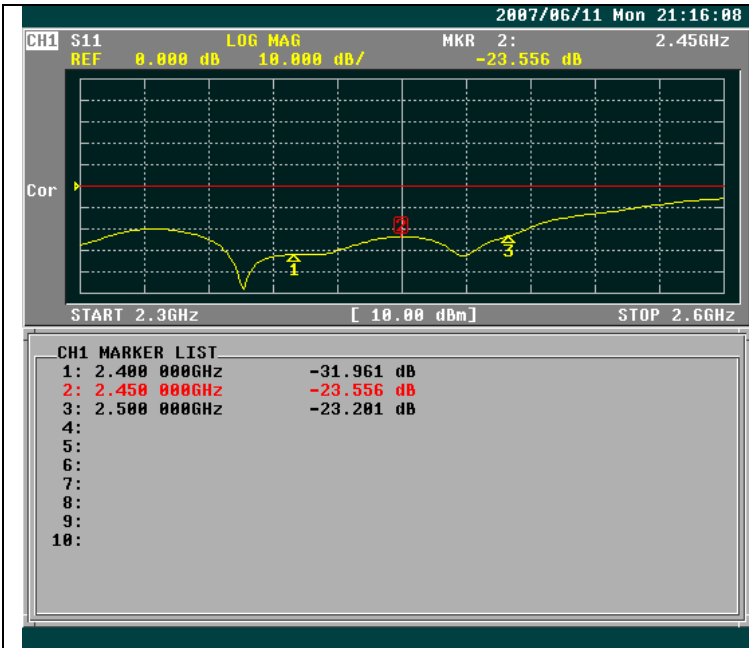
For further details:

Alfa Network Inc.,
4F-1 No. 106, Rueiguang Rd.,
Neihu District,
Taipei City, Taiwan.
<http://www.alfa.com.tw>
sales@alfa.com.tw
Tel:+886-2-27968477
Fax:+886-2-27968478

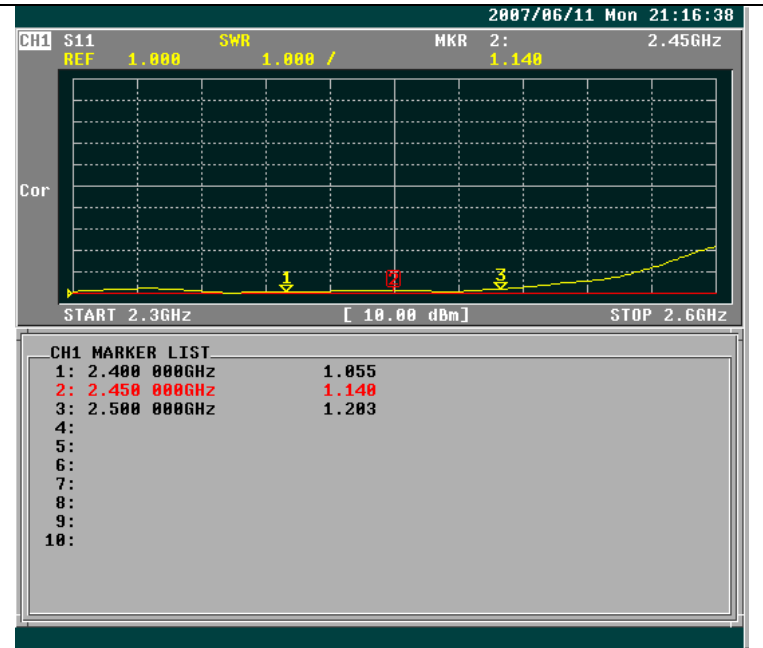
AOA-2412

2.4~2.5GHz Omni Antenna 12dBi

Network Analyzer Test Report



Return loss

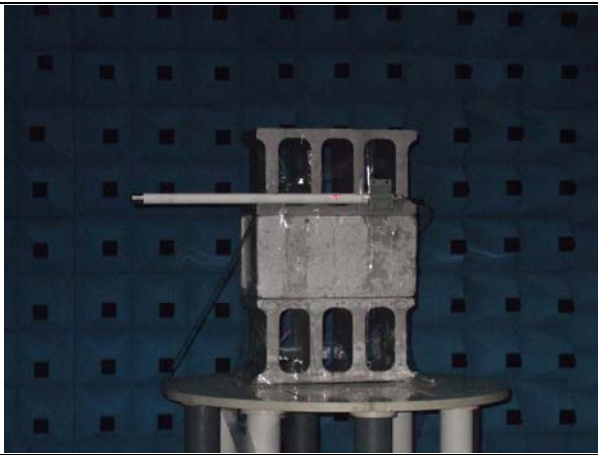


V.S.W.R

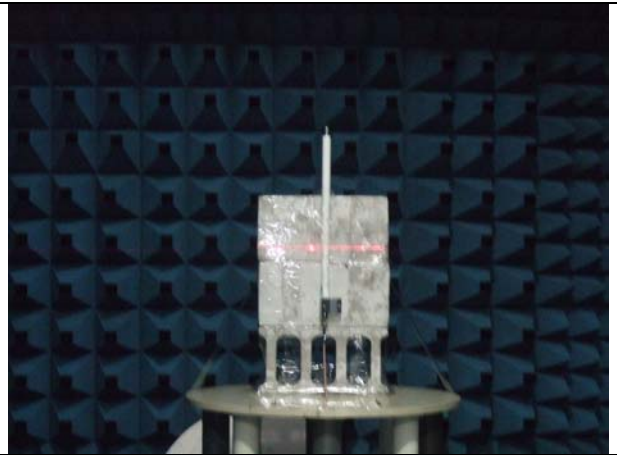
AOA-2412

2.4~2.5GHz Omni Antenna 12dBi

RF Chamber Test Report Frequency: 2.4 ~ 2.5GHz



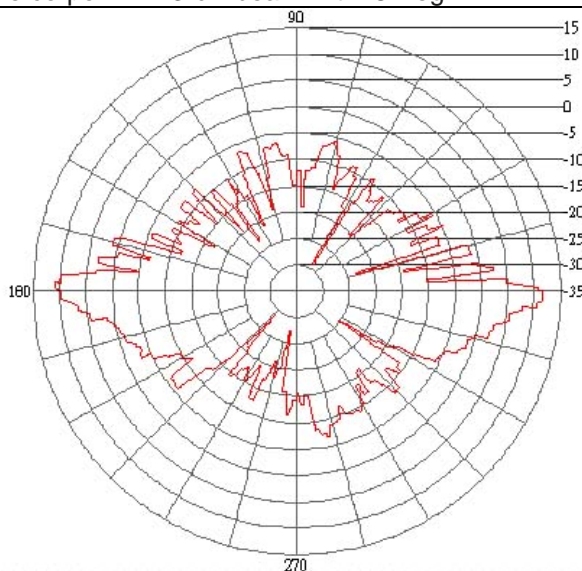
Vertical Pattern Photos



Horizontal Pattern Photos

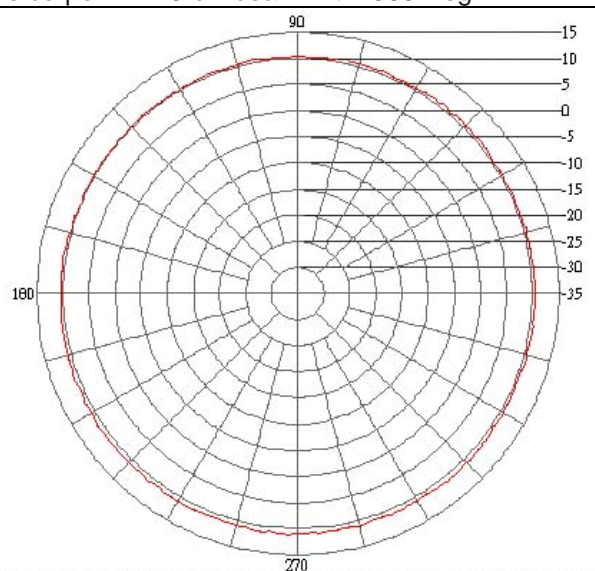
Frequency: 2.4-2.5Ghz

E-plane co-pol ----- 3-dB beam-with=8 Deg



Vertical Pattern

H-plane co-pol ----- 3-dB beam-with=360 Deg

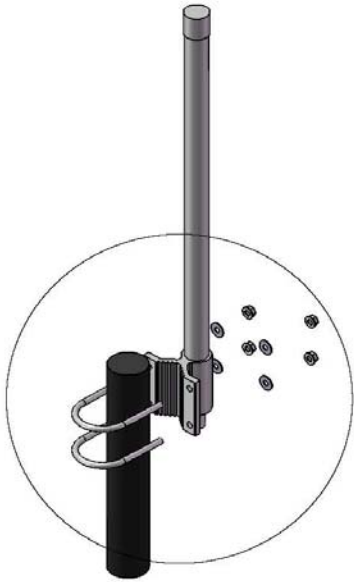


Horizontal Pattern

AOA-2412

2.4~2.5GHz Omni Antenna 12dBi

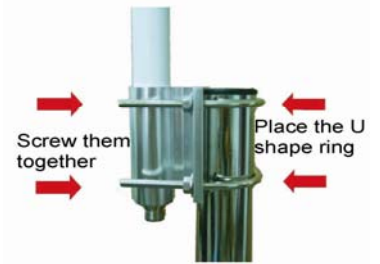
Mounting Kits Install Guide



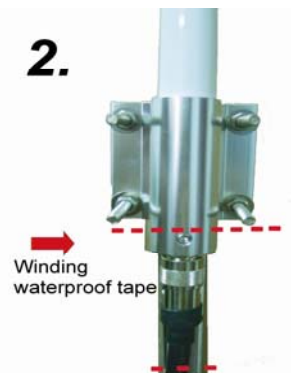
2 : 5



1.



2.



3.

Finish

