

cAP lite

The cAP lite is a tiny access point device with a clean and simple design which will blend into any environment. Perfect for public locations and hospitality businesses like hotels, airports, shopping malls etc. where you can easily place it out of sight, or customise it's looks, to make it even less conspicuous.



Included with the product are two different casings, which can easily be swapped out, or, if you really like to fit the design with the environment, we are providing 3D printer friendly design files. The customisation possibilities are endless.

The cAP lite supports 802.11b/g/n and can be powered by power over ethernet. It's a perfect companion for the MikroTik CAPsMAN (controlled AP system manager), allowing you to control all your AP devices from one central location. The cAP lite can also be used as a stand alone access point with the full potential of RouterOS.



Specifications

Product code	cAP lite
CPU	QCA9533
CPU nominal frequency	650 MHz
CPU core count	1
Size of RAM	64 MB
10/100 Ethernet ports	1
Wireless	Built-in 2.4 GHz 802.11b/g/n, dual-chain
Antenna gain	1.5 dBi
Antenna beam width	360°
Wireless chip model	QCA9531
PoE in	Yes
Supported input voltage	5 V - 60 V (Jack or Passive PoE)
Dimensions	Wall case: 88 x 52 x 20 mm Ceiling case: Ø88 mm x 20 mm
License level	4
Operating System	RouterOS
Max Power consumption	4 W

Wireless specifications

RATE	Tx (dBm)	Rx (dBm)
1MBit/s	22	-96
11MBit/s	22	-89
6MBit/s	20	-93
54MBit/s	18	-74
MCS0	20	-93
MCS7	16	-71

Included



24V 0.2A Power adapter



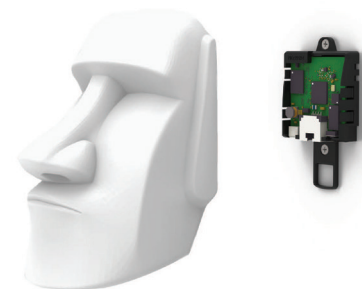
Fastening set



PoE injector



Second case



Custom case 3D model file and instructions are provided on routerboard.com.

Small and in different shapes



Wall



Ceiling

